

Small Operation Center

Version 1.2

Installation Guide

rev. 20051125

Table of Contents

1. Introduction.....	2
2. Software installation.....	2
3. UCD/NET SNMP device configuration.....	4
4. FortiGate Configuration.....	5
5. Mobile phone software.....	8
5.1 Hardware requirement.....	8
5.2 Deploy.....	8
5.2.1 OTA (Over The Air).....	8
5.2.2 Data cable or others.....	8
6. Frequently Asked Question.....	9
1. How can I get manuals for this software.....	9
2. How can I use your unix installer.....	9
3. Can I see the actual number in the utilization graph	9
4. It is not very convenient to add all devices manually, is there a easy way to get it done.....	9
5. I got SNMP error message while adding new device, what can I do.....	9
6. Why I receive error message when re-open syslog tab after closing it.....	10
7. Why I can't launch Mobile Utilization after changed my preference.....	10
8. Why I receive application error while operating Mobile Utilization.....	10
Contact.....	11

1. Introduction

Thank you for downloading this software package. It was inspired by famous MRTG and our information system operation experience. This software comes with the following features:

- ✓ **Cross platform**
This program based on java technology and supposed to run on any system support J2SE without problem.
- ✓ **Plug and Play**
It is not necessary to deal with windows service or unix cron job now. Just supply correct SNMP parameters and you are ready to see what's happening on your system.
- ✓ **High performance**
Built-in HSQL database engine, easy to integrate with MySQL or PostgreSQL DBMS.
- ✓ **Centralized monitor**
Monitor resource utilization and receive syslog events from multiple hosts at the same time.
- ✓ **Mobile technology**
With our leading software developed for mobile phone, you can easily monitor device utilization through GPRS network anytime, anywhere.

2. Software installation

Before you proceed, Please download and install Java 2 Platform Standard Edition 5.0. It's available at this URL:

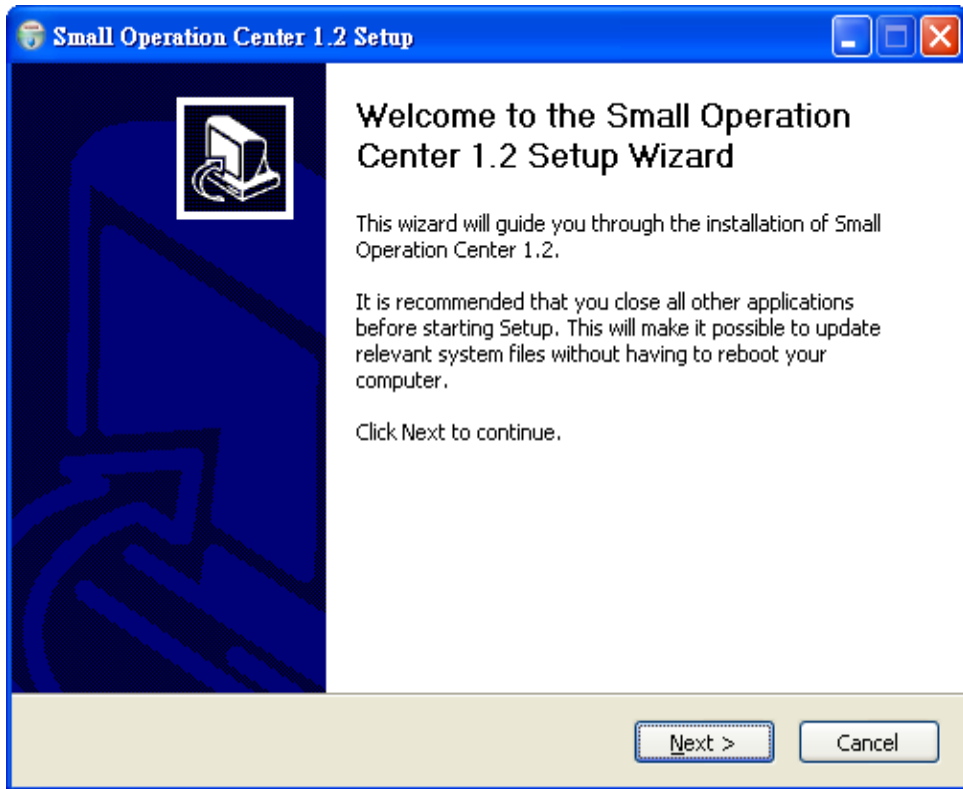
<http://java.sun.com/j2se/1.5.0/download.jsp>

Step 1

Double click on downloaded file 'oc1.2.exe' to start installation.

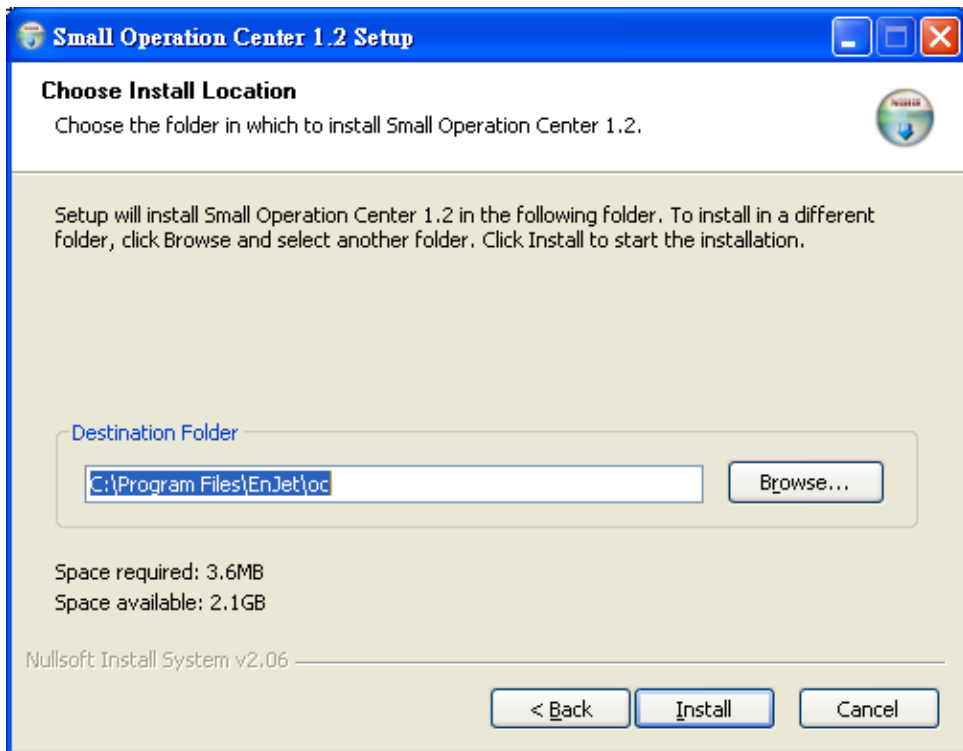
Step 2

The screen will display software information, please click on 'Next' to proceed.



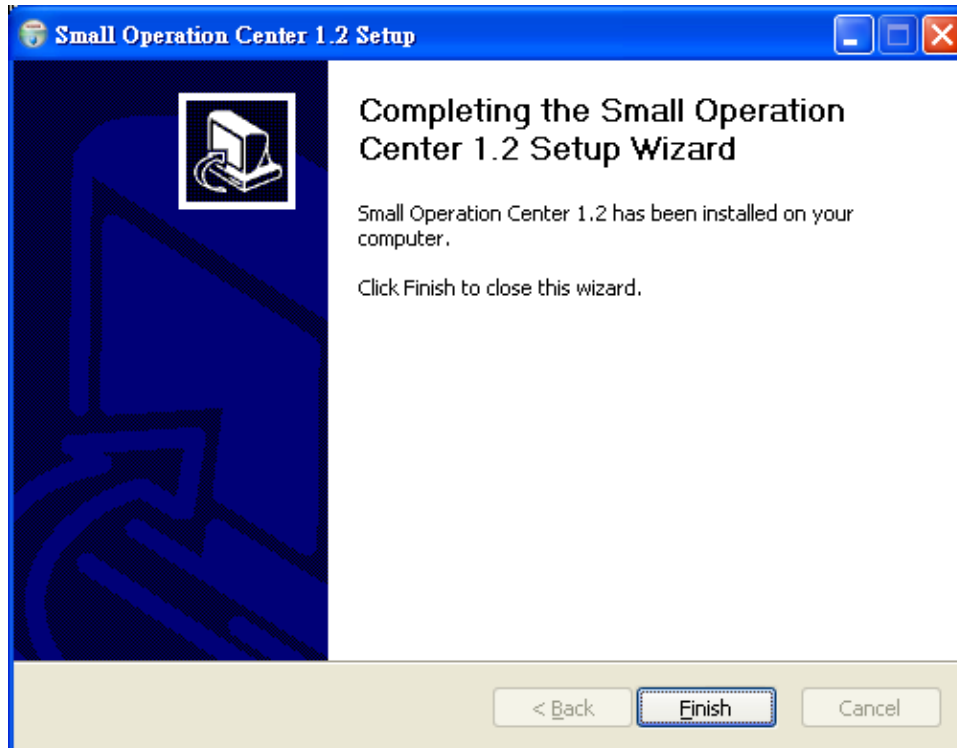
Step 3

Please select destination directory and click on 'Install' to start installation.



Step 4

The installation completed when you see the following screen.



3. UCD/NET SNMP device configuration

You can download source or binary package for various platform from NET-SNMP website.

<http://net-snmp.sourceforge.net/>

Usually, you will need the following line in your snmpd.conf:

```
rocommunity <your community name>  
group ROINT v1 internal  
view systemview included .1  
access ROINT "" any noauth exact systemview none none
```

4. FortiGate Configuration

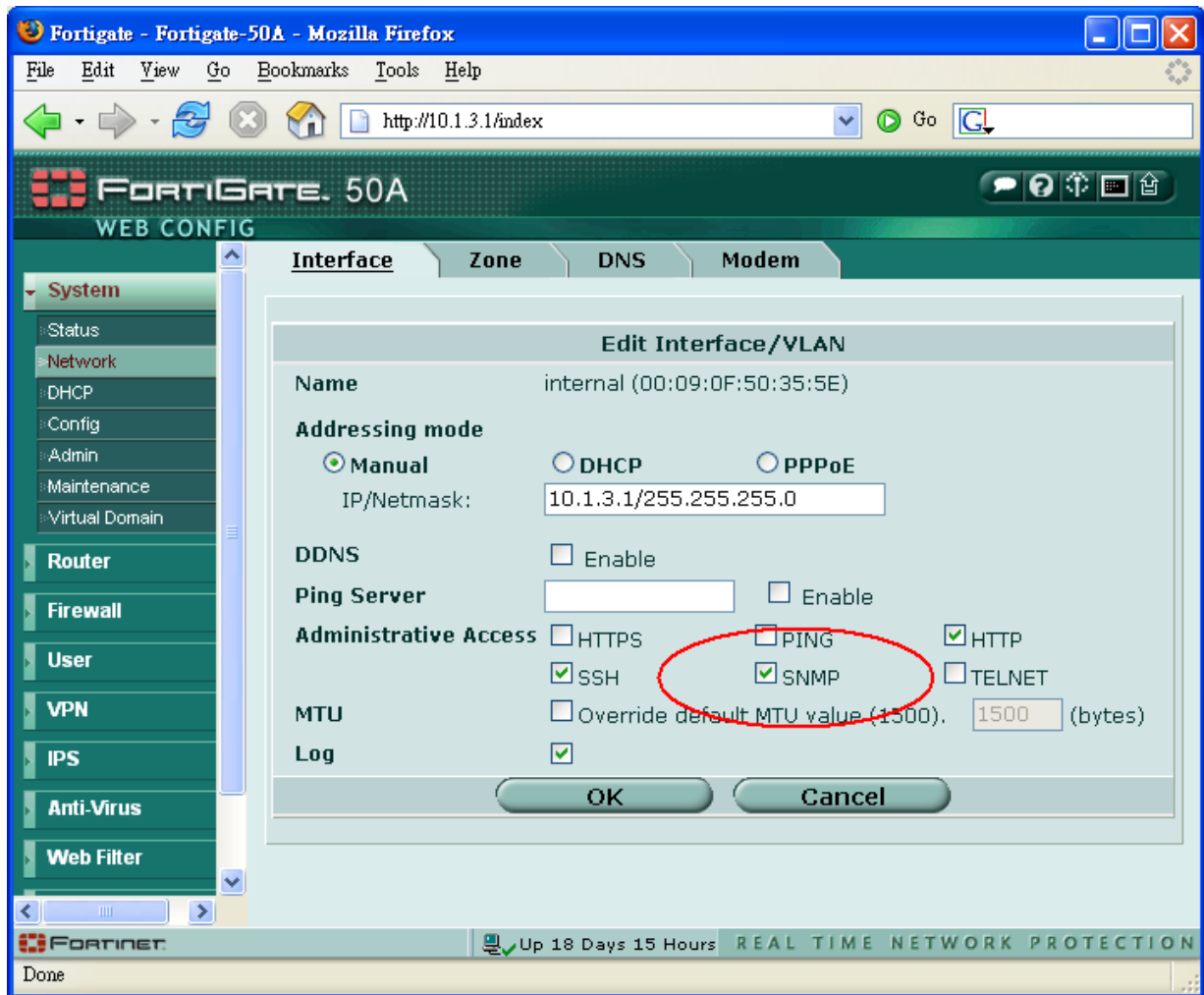
Please follow the procedure below to configure FortiGate :

Step 1

Logon to FortiGate web interface as administrator.

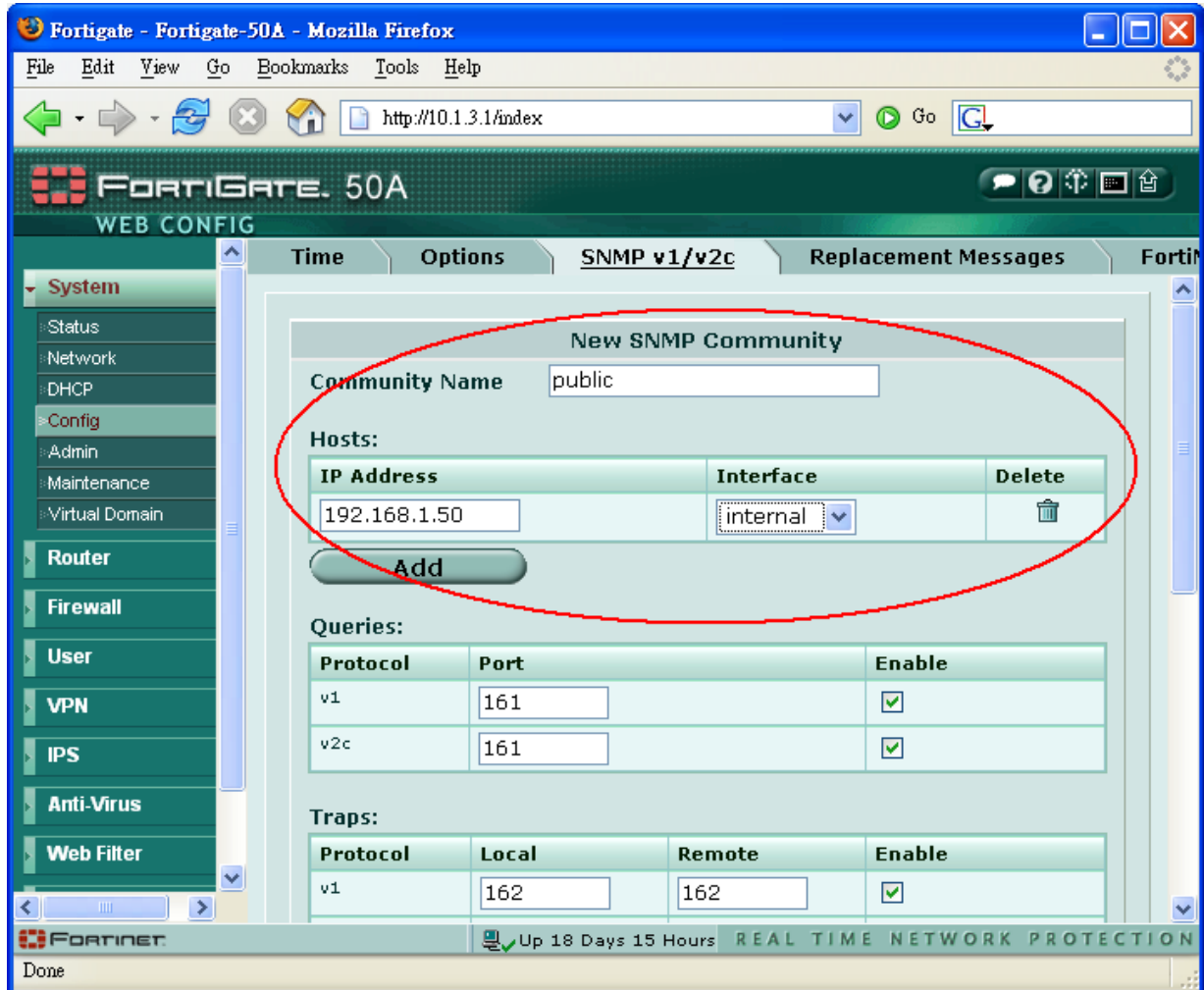
Step 2

From left menu, click **System** >>> **Network**, click on **Interface** tab to configure FortiGate interface allowing SNMP access.



Step 3

From left menu, click **System** >>> **Config**, click on **SNMP v1/v2c** tab, click **Create New** button to setup SNMP community as demonstrated below. Don't forget to press **Apply** button to save your changes.



Step 4

Back to **SNMP v1/v2c** tab, enable FortiGate's SNMP agent as demonstrated below:

The screenshot shows the FortiGate 50A Web Config interface in Mozilla Firefox. The browser address bar shows `http://10.1.3.1/index`. The interface title is "Fortigate - Fortigate-50A - Mozilla Firefox". The main navigation menu includes System, Router, Firewall, User, VPN, IPS, Anti-Virus, and Web Filter. The "System" menu is expanded, showing sub-items like Status, Network, DHCP, Config, Admin, Maintenance, and Virtual Domain. The "SNMP v1/v2c" tab is selected, and the "SNMP Agent" checkbox is checked and highlighted with a red oval. Below the checkbox are input fields for "Description", "Location", and "Contact", followed by an "Apply" button. A "Communities:" section is visible below, with a "Create New" button and a table listing the "public" community.

Name	Queries	Traps	Enable	
public	<input checked="" type="checkbox"/>	<input checked="" type="checkbox"/>	<input checked="" type="checkbox"/>	

5. Mobile phone software

5.1 Hardware requirement

Your phone must support J2ME CLDC 1.0 and MIDP 2.0 specification. Tested phone listed below:

Motorola V303

5.2 Deploy

5.2.1 OTA (Over The Air)

You can use your phone's browser to visit the following URL. The software will be downloaded through GPRS network and deployed automatically after download completed.

<http://<soc ap ip>.8080/mobile/deploy>

5.2.2 Data cable or others

You can also download zip archive which contains full software package from the following URL and deploy later using data cable,IR,bluetooth.

<http://isolution.dyndns.biz/files/MobileUtilization.zip>

6. Frequently Asked Question

1. How can I get manuls for this software

We provide pdf format manuals.

- I. English and Traditional Chinese manuals are available under **manuals** directory of your installation path
- II. It is also available for download in our software product URL listed below:
English: <http://isolution.dyndns.biz/en/security/software.html>
Traditional Chinese: <http://isolution.dyndns.biz/cht/security/software.html>

2. How can I use your unix installer

Simply use command '<JDK or JRE path>/bin/java -jar oc_installer1.2.jar' to start installation process. There are 2 notice here:

- I. Unix installer do not create application shortcuts
- II. Please check ram256.sh or ram512.sh if JRE definition matches you Java installation

3. Can I see the actual number in the utilization graph

Simply place the mouse cursor over the graph, a tooltip will show the actual number.

4. It is not very convenient to add all devices manually, is there a easy way to get it done

Please upgrade to version 1.2 build 051106 or newer. After you add all devices, simply open the **Preference** dialog and press **Save Preference** button. Each device tab will be added automatically next time you lauch application.

5. I got SNMP error message while adding new device, what can I do

The following tests should help you troubleshooting:

- I. Ping or traceroute your device to determine if network connection ok
- II. Check you firewall pass udp 161 port traffic
- III. Issue the following command on host which has snmp tools installed
snmpget -c <your snmp community> -v 1 <your device's IP> 1.3.6.1.4.1.2021.11.10.0
You should see the following output:
UCD-SNMP-MIB::ssCpuSystem.0 = INTEGER: 1

6. Why I receive error message when re-open syslog tab after closing it

It's a known issue on windows version and we are trying to track it down at this time. Currently, 2 workarounds available: 1. use unix version which not affected. 2. Terminate application and re-open syslog tab again.

7. Why I can't launch Mobile Utilization after changed my preference

It happened while we are testing new release. Since we can't re-produce it, we can only suggest workaround. Please delete the whole application from your phone. It will work fine after install and configure your preference again.

8. Why I receive application error while operating Mobile Utilization

Usually, This is because GPRS connection lost or packet dropped while your phone try to connect to application. Please check if you have good signal and restart Mobile Utilization again.

Contact

AmJet Digital Co, Ltd.

Phone: 886 2 89214377

Web: <http://isolution.dyndns.biz>

Support email: support@isolution.dyndns.biz

Skype: amjetd

MSN: support@isolution.dyndns.biz